

15 | RC



RC 350 | Aggressive coupe body style, a 3.5-liter V6 delivering 306 horsepower,¹ available all-new Remote Touchpad controller,² and six- or eight-speed transmission with paddle shifters. Available in RWD or AWD.

RC 350 F SPORT | Athletic performance with a highly rigid body, exclusive F SPORT styling, Adaptive Variable Suspension, 19-inch split-10-spoke wheels³ and an LFA-inspired gauge cluster. Available in RWD or AWD.

INTRODUCING THE FIRST-EVER 2015 RC





FASTEN YOUR
EVERYTHING.

AN AGGRESSIVE STANCE

How do you engineer a vehicle that delivers radical performance matched only by its radical design? Start from the ground up. With an all-new coupe body style that boasts sculpted lines and a wide, low stance, the RC seamlessly balances eye-catching design with breathtaking performance.





F SPORT

Taking design cues from the sophisticated lines of the coupe body, the interior of the RC F SPORT is a sleek and aggressive command center. Its enhanced bolstered front sport seats are engineered to grip you through every turn, and a perforated leather-wrapped steering wheel and LFA-inspired instrumentation help satisfy your craving for performance. Exclusive stitching and sculptural interior lines will realize your demand for cutting-edge design.



IT CROSSES THE LINE.
AND DRAWS A NEW ONE.



ADAPTIVE VARIABLE SUSPENSION

This available system monitors and adjusts the shock absorber setting at each wheel, helping to reduce body lean as you enter and exit turns. In Sport S+ mode, AVS is automatically tightened for more dynamic handling, while the throttle and available Variable Gear-Ratio Steering (VGRS) systems are enhanced for greater response.

DYNAMIC REAR STEERING

Depending on speed, this available feature turns the front and rear wheels in the same or opposing directions to help provide optimal agility.

VARIABLE GEAR-RATIO STEERING

This available advanced system is engineered to anticipate and help deliver the ideal steering response for virtually any situation.

F SPORT BRAKES

The rear-wheel drive RC F SPORT features larger, two-piece front brake rotors, high-friction brake pads⁴ and a unique multistage booster for optimized control, response and feel.



Get more of what you want when you want it. The available Lexus Dynamic Handling system and other performance features found on the RC F SPORT allow you to customize everything from suspension to throttle response. So go ahead and get exactly what you desire: performance on demand.



Too much power? Too much control? No such thing. Own the road in a way that's totally your own with a six- or eight-speed transmission with paddle shifters for optimum control. Delivering heart-racing, split-second gear changes, the paddle shifters in the RC help you realize the full potential of its 306-hp¹ V6 engine.

LIFT A FINGER, RAISE YOUR HEART RATE.



REMOTE TOUCHPAD

Equal parts functionality and form, the available Remote Touchpad² is more than a way to access multimedia, climate control and more. Offering an ample touch-surface area, pulsation feedback and intuitive operation via pinch, swipe and flick gestures just like your smartphone, the touchpad² found in the RC offers innovation at your fingertips.



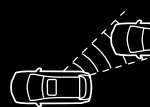
DRIVE MODE SELECT

Drive Mode Select's Sport mode holds lower gears longer and provides more dynamic throttle response. The available Sport S+ mode tightens the suspension and varies the available Variable Gear-Ratio Steering (VGRS) system to deliver enhanced responsiveness. And if you choose ECO mode, the throttle response and climate-control systems are moderated for increased fuel efficiency.



BOLSTERED F SPORT SEATS

Feel confidence through every curve with available front sport seats designed to hold you through even the most aggressive of turns. Featuring a unique foam construction and designed to contour to the needs of the driver, these sport seats will have you wrapped from hip to shoulder—especially in high-G situations. Their low position helps place the driver's hip point as close as possible to the car's center of gravity for a more dynamic driving experience.



ADVANCED BLIND SPOT MONITOR

Only the most progressive technologies belong in a vehicle as advanced as the RC. Featuring an available updated Blind Spot Monitor,⁵ the RC lets you focus on owning the road. This system not only alerts you when it detects vehicles approaching from behind, but also is capable of doing so for vehicles approaching at higher speeds.



LEXUS ENFORM REMOTE

The new available Lexus Enform Remote⁶ mobile app can remotely start the engine, lock and unlock doors, check the status of doors and windows as well as your fuel level, and can help find your vehicle's location in a parking lot. And, should you loan your RC to another driver, you can receive instant alerts if, for example, a preset speed or mile limit is exceeded. Lexus Enform Remote⁶ is complimentary for the first year of ownership. *Learn more at lexus.com/enform.*



ADVANCED CONNECTIVITY

The innovative Siri[®] Eyes Free⁷ connects with your compatible iPhone,[®] enabling you to access e-mail, send text messages and more. In addition, to help you make the most of your travel, an industry-first subscription-free traffic and weather service⁹ offers real-time updates of changing conditions via HD Radio.^{TM9} *Learn more at lexus.com/enform.*



DYNAMIC GAUGE CLUSTER

The available full-color LCD display within the gauge cluster allows you to quickly and easily read the data you need to keep optimum performance. Readouts include drive mode, shift position and odometer information. Additionally, this in-dash display offers multimedia linkage so that you can view incoming calls, current song titles and more.



CRAFTSMANSHIP

While the exterior of the RC screams exhilarating performance, the interior makes an audacious statement of its own. From available features such as the eye-catching perforated leather-trimmed seats and exclusive wood trim to the scintillating heated and ventilated front seats and heated steering wheel (AWD only), you'll find that the RC delivers an ideal combination of performance and luxury.



DESIGNED TO TAKE YOUR
SENSES OVER THE EDGE.

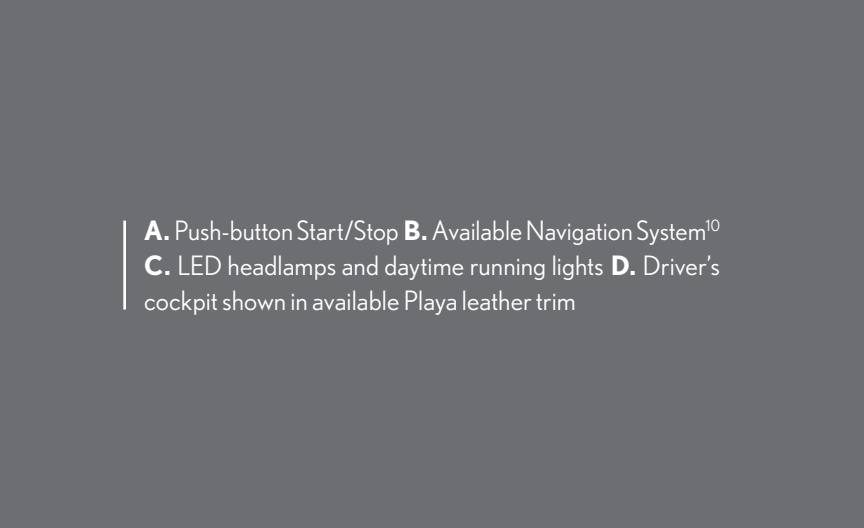
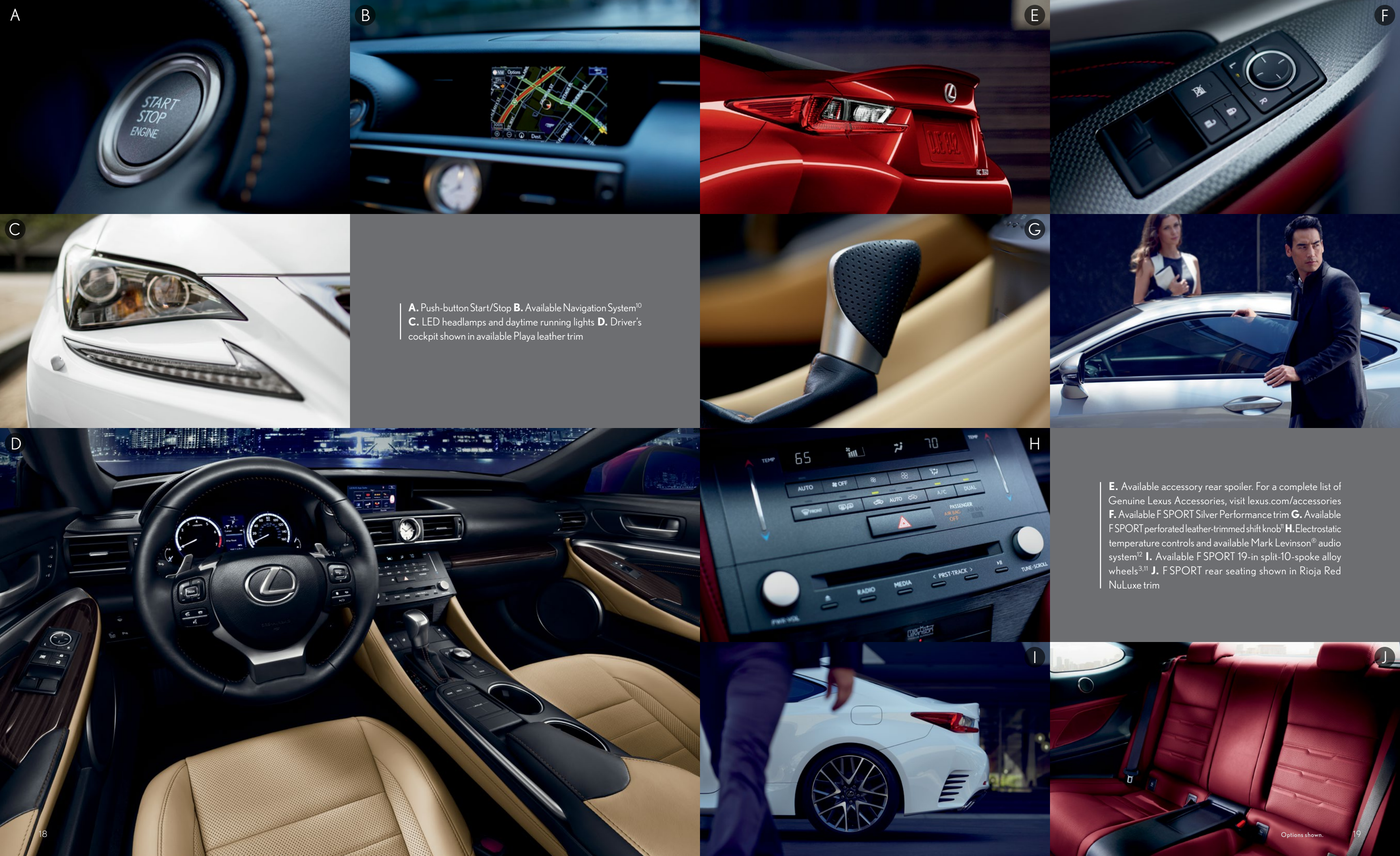
Whether it's the striking beauty of the intensely sculpted lines found on the outside of the RC or the profound strength delivered by its reinforced rockers and newly designed underbody bracing, you'll discover the unconventional design of the RC can elicit a response as visceral as the one evoked by its radical performance.



ALL-WEATHER DRIVE

Throw caution to the wind. Or the rain. With the brilliantly engineered All-Weather Drive system offered on the RC, you experience control in nearly every driving condition. By monitoring current conditions, the available all-wheel drive automatically distributes engine power between the front and rear axles to provide optimum traction and control—especially in inclement weather.







INTRODUCING THE NEXT LEVEL OF F:

THE 2015 RC F

5.0L V8 DELIVERING 467 HORSEPOWER¹

EIGHT-SPEED SPORT DIRECT-SHIFT AUTOMATIC TRANSMISSION

SPEED-ACTIVATED REAR WING

AVAILABLE TORQUE VECTORING DIFFERENTIAL

AVAILABLE CARBON FIBER ROOF AND REAR WING



KEY
STANDARD
FEATURES

SmartAccess^{13,14} and push-button Start/Stop // LED headlamps // LED daytime running lights // SmartKey door handles with integrated LED puddle lamps // Genuine wood interior trim // Frameless electrochromic (auto-dimming) rearview mirror with compass and HomeLink® universal transceiver // 60/40-split fold-down rear seats // Drive Mode Select // NuLuxe interior trim // 10-way power driver’s seat // 8-way front passenger power seat // Siri Eyes Free⁷ // Display Audio with color screen // 10-speaker audio system // Backup camera¹⁵ with dynamic gridlines // Traffic and weather updates⁹ via HD Radio™⁹ // Bluetooth®¹⁶ phone and audio¹⁷ connectivity // Eight airbags¹⁸// Lexus Enform Remote⁶ with one-year trial subscription // Lexus Enform Safety Connect.¹⁹ Subscription required. One-year trial subscription included

INDIVIDUAL
OPTIONS

Blind Spot Monitor⁵ with Rear Cross-Traffic Alert²⁰ // LED foglamps // Heated and ventilated front seats // Intuitive Parking Assist²¹ // Dynamic Radar Cruise Control²² with Pre-Collision System²³ // Moonroof // Variable Gear-Ratio Steering (RWD FSPORT only)

PACKAGES

F SPORT

Adaptive Variable Suspension with SPORT S+ mode // High-friction front brake pads⁴ (RWD only) // Sport Vehicle Dynamics Integrated Management (VDIM)²⁴ // FSPORT 19-in split-10-spoke alloy wheels with summer (RWD) or all-season (AWD) tires³ // LFA-inspired instrumentation // FSPORT grille, front fascia, fender and rear badges // Blind Spot Monitor⁵ with Rear Cross-Traffic Alert²⁰ // Heated and ventilated front sport seats // Lexus Memory System for driver’s seat, outside mirrors and steering column // Perforated leather-trimmed shift knob and steering wheel with FSPORT logo // Heated steering wheel (AWD only) // Power tilt-and-telescopic steering column // Aluminum sport pedals // Stainless-steel door sills // Silver Performance trim // Black headliner

PREMIUM PACKAGE

Heated and ventilated front seats // Blind Spot Monitor⁵ with Rear Cross-Traffic Alert²⁰

LUXURY PACKAGE

(Includes Premium Package) + Perforated leather-trimmed interior // Power tilt-and-telescopic steering column // Lexus Memory System for driver’s seat, outside mirrors and steering column // Electrochromic (auto-dimming) outside mirrors with auto tilt-down in reverse // Rain-sensing windshield wipers // Heated steering wheel (AWD only)

NAVIGATION PACKAGE

Navigation System with color multimedia display // Remote Touchpad² controller // Voice command // Enhanced Bluetooth technology¹⁶ // Lexus Enform App Suite²⁵ with Bing™ iHeartRadio, OpenTable®, MovieTickets.com, Pandora®,²⁶ Yelp® and Facebook Places. // Lexus Enform Destinations with Destination Assist and eDestination. Subscription required. One-year trial subscription included

NAVIGATION/MARK LEVINSON AUDIO PACKAGE

(Includes Navigation Package) + Mark Levinson Premium Surround Sound Audio System¹² // 17 speakers // 835-watt Class-D amplifier // Clari-Fi™ audio processing // Auto volume technology // Machined-aluminum control knobs

ALL-WEATHER PACKAGE (AWD only)

Headlamp washers // Windshield-wiper deicer

WHEELS



18-in five-spoke alloy wheels³
Standard



19-in split-five-spoke alloy wheels³
Available



19-in split-10-spoke alloy wheels³
RC FSPORT



FSPORT 19-in full-face forged alloy wheels^{3,11}
Available AWD only



FSPORT 19-in forged alloy wheels^{3,11}
Available



FSPORT 19-in split-nine-spoke alloy wheels^{3,11}
Available Winter 2014

KEY SPECS

306^{HP1}
RC 350/FSPORT

3.5L V6 ENGINE

RWD OR AWD
STANDARD AVAILABLE

DRIVETRAIN

19 / 28 / 22²⁸ EST
RC 350/FSPORT RWD MPG

FUEL ECONOMY, EPA-ESTIMATED RATINGS (CITY/HIGHWAY/COMBINED)



WIDTH 81.5 IN

HEIGHT

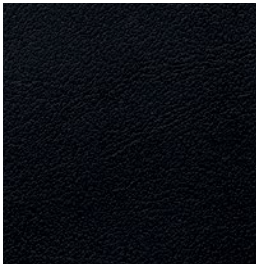
54.9 IN (RWD)
55.1 IN (AWD)



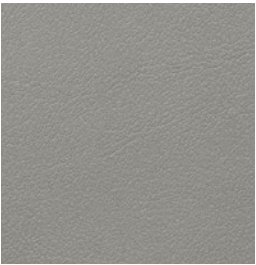
WHEELBASE 107.5 IN
OVERALL LENGTH 184.8 IN

RC shown in Silver Lining Metallic // Options shown.

INTERIOR



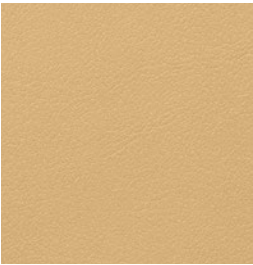
BLACK
LEATHER or NULUXE



STRATUS GRAY
LEATHER or NULUXE



FLAXEN
LEATHER or NULUXE

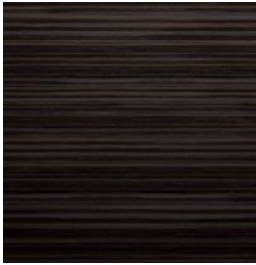


PLAYA
LEATHER or NULUXE

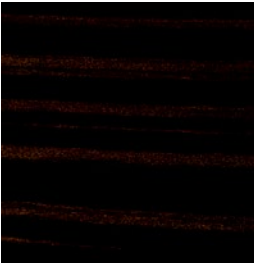


RIOJA RED*
NULUXE

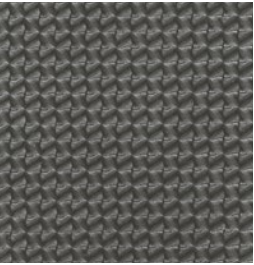
TRIM



LINEAR ESPRESSO
WOOD



LINEAR DARK
MOCHA WOOD



SILVER
PERFORMANCE*

LEATHER or NULUXE INTERIOR	EXTERIOR	Starfire Pearl	Infrared†	Atomic Silver	Obsidian	Nebula Gray Pearl	Silver Lining Metallic	Ultra White*	Molten Pearl*	Ultrasonic Blue Mica 2.0†‡	TRIM	Linear Espresso Wood	Linear Dark Mocha Wood	Silver Performance*
		■	■▲	■▲	■▲	■▲	■▲	▲	▲	▲		■		▲
		■	■▲	■▲	■▲	■▲	■▲	▲	▲	▲		■		▲
		■	■	■	■	■	■						■	
		■	■▲	■▲	■▲	■▲	■▲	▲	▲	▲			■	▲
				▲	▲	▲	▲	▲	▲	▲				▲

■ Standard
▲ F SPORT
* F SPORT exclusive
† Available with NuLuxe only
‡ Additional charge

EXTERIOR



STARFIRE PEARL



INFRARED‡



ATOMIC SILVER



OBSIDIAN



NEBULA GRAY PEARL



SILVER LINING METALLIC



ULTRA WHITE*



MOLTEN PEARL*



ULTRASONIC BLUE MICA 2.0*‡

SERVICES AS INNOVATIVE AS THE RC ITSELF.

THE LEXUS DELIVERY AND TECHNOLOGY SPECIALISTS. To assist you in getting the most out of your RC, the Lexus Delivery Specialist will conduct a personalized delivery focused on every feature, setting and function you desire. To answer questions that arise after delivery, the Lexus Technology Specialist can offer expert guidance in person or without you ever leaving the driveway, via camera-enabled iPad® apps like FaceTime.®²⁹ Learn more about our Lexus Delivery and Technology Specialist services at lexus.com/specialists.

WARRANTY Four-year/50,000-mile Lexus Limited Warranty. Six-year/70,000-mile Powertrain Warranty. Six-year/unlimited-mileage Corrosion Perforation Warranty. All warranties with zero deductible. See the *RC Warranty and Services Guide* at your Lexus dealer for details. **DISCLOSURES** **1.** Ratings achieved using the required premium unleaded gasoline with an octane rating of 91 or higher. If premium fuel is not used, performance will decrease. **2.** Be sure to obey traffic regulations and maintain awareness of road and traffic conditions. **3.** 18- or 19-in performance tires are expected to experience greater tire wear than conventional tires. Tire life may be substantially less than 15,000 miles, depending upon driving conditions. **4.** High-friction brakes require periodic inspection and measurement as outlined in the *Warranty and Services Guide*. The pads and rotors are expected to experience greater wear than conventional brakes. Pad life may be less than 20,000 miles, and brake rotor life may be less than 50,000 miles depending on driving conditions. F SPORT models may feature Brembo® brakes. It is an inherent characteristic of materials and design of brake pads used in this high-performance brake system that brake noise/squeal may result. **5.** Do not rely exclusively on the Blind Spot Monitor. Always look over your shoulder and use your turn signal. There are limitations to the function, detection, range and clarity of the monitor. For a complete list of limitations and directions regarding use of the monitor, see *Owner's Manual*. **6.** Use only if aware of circumstances surrounding the vehicle, and it is legal & safe to do so (e.g. car uncovered in open area, no people or pets in or nearby). If vehicle has not been driven for over a week, services will not be available until next time vehicle is started. Functionality depends on many factors, such as vehicle and smartphone connectivity. See usage precautions, service limitations & *Owner's Manual*. Data charges may apply. Registration, app download are required. Must have active Safety Connect subscription. Annual fee required after 1-year trial. **7.** Always drive safely, obey traffic laws & focus on the road while driving. Siri® is available in Beta only on iPhone® 4S, iPhone® 5, iPad® with Retina® display, iPad® mini, & iPod® touch, 5th gen. & requires Internet access. Siri® is not available in all languages or all areas & features vary by area. Data charges may apply. See Apple.com & phone carrier for details. **8.** iPhone® and iPad® are registered trademarks of Apple Inc. All rights reserved. **9.** HD Radio™ Technology manufactured under license from iBiquity Digital Corporation U.S. and Foreign Patents. HD Radio™ and the HD, HD Radio, and "Arc" logos are proprietary trademarks of iBiquity Digital Corp. **10.** Availability & accuracy of the information provided by the Navigation System is dependent upon many factors. Use common sense when relying on information provided. Services and programming subject to change. Services not available in every city or roadway. Updates may be available at an additional cost from your dealer. See *Navigation System Owner's Manual* for details. **11.** F SPORT Accessories are warranted for 12 months from the date of installation or for the balance of the new-car or Certified Pre-Owned (CPO) warranty in force at the date of installation, whichever is greater, when installed by an authorized Lexus dealer. F SPORT Accessories installed by anyone other than an authorized Lexus dealer are warranted for 12 months from the date of purchase only, and the warranty coverage is limited to the replacement value of the F SPORT Accessories. These warranties do not cover maintenance services such as replacement of brake pads/linings and clutch linings or noise, vibration, cosmetic conditions and other deterioration caused by normal wear and tear. Part failure caused by improper installation by anyone other than an authorized Lexus dealer may void the F SPORT Accessories warranty, the new-vehicle warranty or both. F SPORT is a trademark of Toyota Motor Corporation. Products available through participating Lexus dealers. **12.** Mark Levinson® is a registered trademark of Harman International Industries, Inc. **13.** The SmartAccess system may interfere with some pacemakers or cardiac defibrillators. If you have one of these medical devices, please talk to your doctor to see if you should deactivate this system. **14.** The engine immobilizer is a state-of-the-art anti-theft system. When you insert your key into the ignition switch or bring a SmartAccess fob into the vehicle, the key transmits an electronic code to the vehicle. The engine will only start if the code in the transponder chip inside the key/fob matches the code in the vehicle's immobilizer. Because the transponder chip is embedded in the key/fob, it can be costly to replace. If you lose a key or fob, your Lexus dealer can help. Alternatively, you can find a qualified independent locksmith to perform high-security key services by consulting your local *Yellow Pages* or by contacting www.aloa.org. **15.** The backup camera does not provide a comprehensive view of the rear area of the vehicle. You should also look around outside your vehicle and use your mirrors to confirm rearward clearance. Cold weather may limit effectiveness and view may become cloudy. **16.** The Bluetooth® word mark and logos are registered trademarks owned by Bluetooth SIG, Inc. and any use of such marks by Lexus is under license. A compatible Bluetooth-enabled phone must first be paired. Phone performance depends on software, coverage & carrier. **17.** Bluetooth® audio device must be enabled with A2DP and AVRCP. **18.** All the airbag (AB) systems are Supplemental Restraint Systems. All ABs are designed to inflate only under certain conditions and in certain types of severe collisions: frontal and knee ABs typically inflate in frontal collisions; side and side curtain ABs in side collisions; Roll-Sensing Curtain ABs at a severe tilt degree, roll or lateral G-force. In all other accidents, the ABs will not inflate. To decrease the risk of injury from an inflating AB, always wear seatbelts, sit upright in the middle of the seat as far back as possible and do not lean against the door. Do not put objects in front of an AB or around the seatback. Do not use a rearward-facing child seat in any front passenger seat. The force of an inflating AB may cause serious injury or death. See *Owner's Manual* for further information/warnings. **19.** Contact with the response center may not be available in all areas. Service Agreements required. A variety of subscription terms available; charges will vary. See lexus.com for details. **20.** Do not rely exclusively on the Rear Cross-Traffic Alert system. Always look over your shoulder and use your mirrors to confirm rear clearance. There are limitations to the function, detection, range and clarity of the system. To learn more, see *Owner's Manual*. **21.** Do not rely exclusively on the Intuitive Parking Assist system. Always look over your shoulder and use your mirrors to confirm clearance. System effectiveness depends on many factors. See *Owner's Manual* for details. **22.** Dynamic Radar Cruise Control is designed to assist the driver and is not a substitute for safe and attentive driving practices. See *Owner's Manual* for details. **23.** The Pre-Collision System is designed to help reduce the crash speed and damage in certain frontal collisions only. It is not a collision-avoidance system and is not a substitute for safe and attentive driving. System effectiveness depends on many factors, such as speed, driver input and road conditions. See *Owner's Manual* for further information. **24.** Vehicle Dynamics Integrated Management (VDIM) is an electronic system designed to help the driver maintain vehicle control under adverse conditions. It is not a substitute for safe driving practices. Factors including speed, road conditions and driver steering input can all affect whether VDIM will be effective in preventing a loss of control. See *Owner's Manual* for further details. **25.** Apps/services vary by phone/carrier; functionality depends on many factors. Select apps use large amounts of data; you are responsible for charges. Apps & services subject to change. See lexus.com/enform for details. **26.** PANDORA®, the PANDORA® logo, and the Pandora trade dress are trademarks or registered trademarks of Pandora Media, Inc., used with permission. **27.** Performance figures are for comparison only and were obtained with prototype vehicles by professional drivers using special safety equipment and procedures. Do not attempt. **28.** 2015 EPA-estimated ratings. Actual mileage will vary. **29.** FaceTime® is a registered trademark of Apple Inc. All rights reserved.

Lexus strives to build vehicles to match customer interest, and thus they typically are built with popular options and option packages. Not all options/packages are available separately, and some may not be available in all regions of the country. See lexus.com for information about options/packages commonly available in your area. If you would prefer a vehicle without any or with different options, contact your dealer to check for current availability or the possibility of placing a special order. Specifications, features, equipment, technical data, performance figures, options, and color and trim are based upon information available at time of printing, are subject to change without notice, and are for mainland U.S.A. vehicles only. Some vehicles shown with available equipment. See your Lexus dealer for details. Lexus reminds you to wear seatbelts, secure children in rear seat, obey all traffic laws and drive responsibly. For more information, call 800-USA-LEXUS (872-5398) or visit lexus.com. To learn more about your financing options, contact your Lexus dealer or call Lexus Financial Services at 800-874-7050.

