



BUICK

BUICK.CA





2018 BUICK

ENVISION



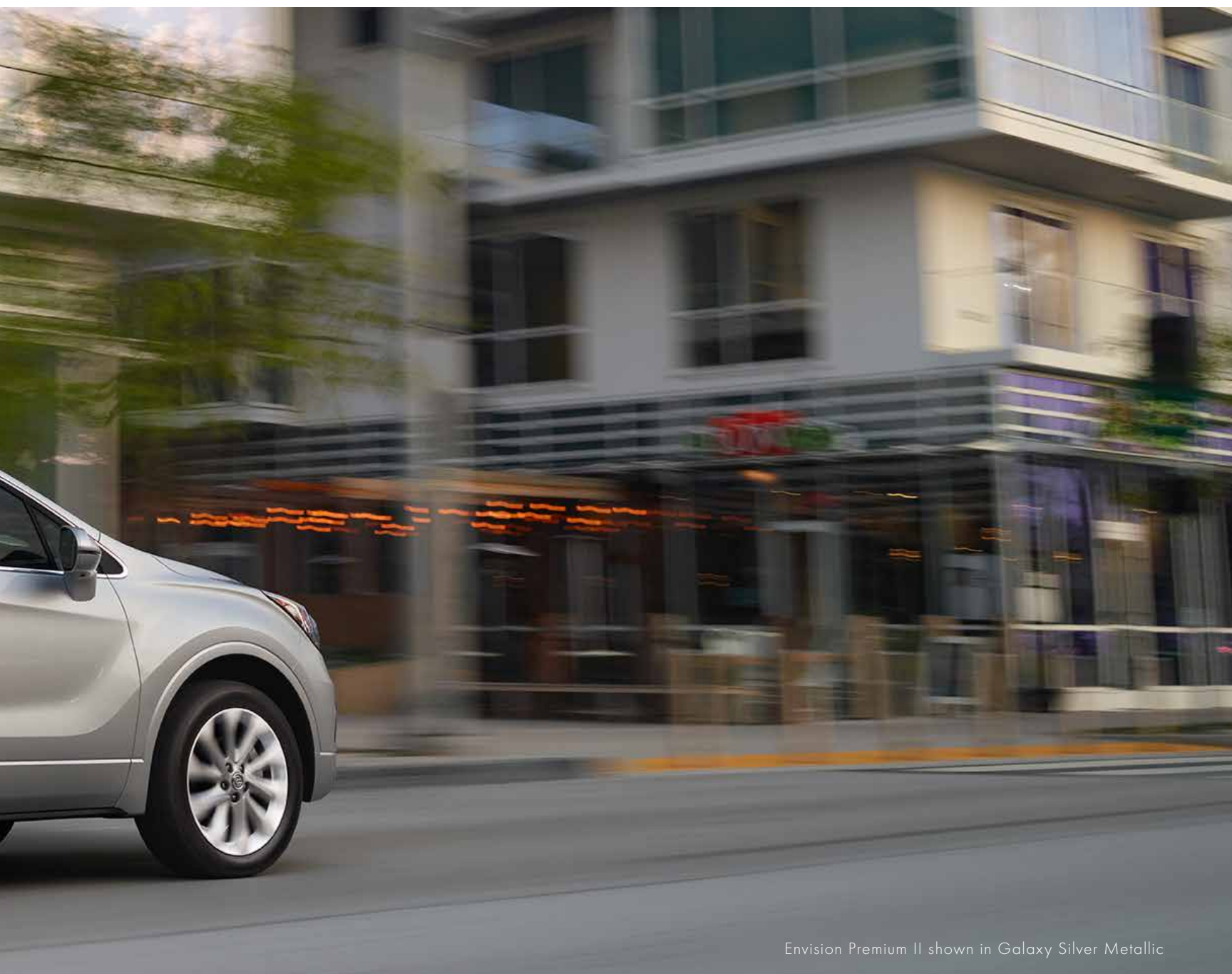


Your sense of luxury has been set in motion with

THE 2018 BUICK ENVISION.

Responsive performance, intelligent innovations and a thoughtfully

crafted interior ensure that Envision is a joy to drive and a joy to share.



Envision Premium II shown in Galaxy Silver Metallic





Welcome inside Envision. Enter a cabin where you'll come to appreciate what's meant
by the idea of **BEAUTY FROM THE INSIDE OUT.**

With a modern interior designed around a centre console with innovative dual-winged doors,
standard features such as QuietTuning™ with Active Noise Cancellation and an available
seven-speaker Bose® premium audio system, Envision creates a profound sense
that you're secure, connected and truly at ease.



It only takes an instant to form your first impression. One press of the accelerator proves Envision has a **SPIRITED PERFORMANCE SUITED TO THE WAY YOU LIVE.** A glance at its elegant proportions confirms this Buick is crafted to an exceptional degree of refinement. Its bold grille and jewel-like LED-accented headlamps reflect the pure driving enjoyment you'll experience in Envision. This is your kind of luxury.

Envision Premium II
shown in Bronze Alloy Metallic
with available features



RELAX

WHAT MAKES ONE EXPERIENCE MORE REFINED THAN ANOTHER? IT'S HOW THE DETAILS ENHANCE THE SENSATIONS YOU ENCOUNTER ALONG THE WAY.

Inspiration for the Envision interior didn't come from other vehicles. It came from the sorts of places you go to relax in style. Think boutique hotels, luxurious day spas and other blissfully quiet retreats. Think understated, uncluttered design, where the quality of the finishes, the exceptional materials and the ambience of the lighting give the space a special feeling. With Envision, the result is a conversation space where up to five passengers can travel in remarkable acoustic comfort. You'll be in the perfect frame of mind to enjoy Envision's full complement of features.

- Premium soft-touch materials throughout, rich trim and ice-blue ambient lighting.
- Standard hands-free power liftgate, 60/40 fold-flat rear seats and a flat rear floor.
- Standard eight-way adjustable driver and front-passenger seats with power lumbar.
- Available French stitched, leather-appointed seats.
- Available cooled and ventilated front seats.
- Available tri-zone HVAC automatic climate control system, standard sliding second-row seating with three seatback angles and available heated rear outboard seats.
- Available seven-speaker Bose® premium audio system.



Envision Premium II shown in Ebony
with Ebony accents and available features



Buick engineered Envision with QuietTuning, a technology that helps reduce, block and absorb noise and vibration in the cabin, so it's a quiet environment ideal for conversation. How does QuietTuning work? By counteracting engine noise with Active Noise Cancellation. By helping to block outside noise with acoustic laminated glass in the windshield and front side windows and using inner-door sound barriers and triple door seals. By absorbing engine noise and vibration with premium seating materials and hydraulic top engine mounts.



RESPOND

IN THE 2018 ENVISION, ADVANCED ENGINEERING SYSTEMS CREATE A FEELING OF CONFIDENCE AND CONTROL FOR THE DRIVER.

What forges the connection between a car and its driver? It starts with how well a vehicle responds to driver input—the turn of a steering wheel or the press of a brake pedal. As you settle into the heated driver's seat, your hands wrap around the leather-wrapped rim of the available heated steering wheel, and your eyes scan the gauges laid out in front of you. Now engage the Start button and feel the torque-rich response of Envision's available turbocharged engine. Ready for the best feeling of all? Move the shift lever into Drive. Your every move is met by an intelligent All-Wheel Drive with available active twin-clutch system, helping ensure sure-footed traction.

- An efficient and spirited 2.5L engine with 197 hp is standard. Or choose the available 2.0L Turbo engine with 252 hp and 260 lb.-ft. of torque to turbocharge every drive.
- The intelligent All-Wheel Drive with available active twin clutch automatically adjusts torque to each wheel to optimize traction and help respond before slip occurs.
- Envision's tight turning radius makes for nimble manoeuvres and easy parking.
- The available HiPer Strut front suspension provides Envision with responsive steering and cornering while it helps dampen road noise and vibration.
- Safety features and driver convenience alerts that are available include Forward Collision Alert, Lane Change Alert with Side Blind Zone Alert,¹ Rear Cross Traffic Alert, Lane Keep Assist with Lane Departure Warning, Front and Rear Park Assist and a Safety Alert Seat, while 10 airbags² and a Rear Vision Camera are standard.

¹Before making a lane change, always check the exterior and interior rear-view mirrors, look over your shoulder for vehicles and hazards and start the turn signal. ²Always use safety belts and the correct restraint for your child's age and size. Even in vehicles equipped with the Passenger Sensing System, children are safer when properly secured in a rear seat in the appropriate infant, child or booster seat. Never place a rear-facing infant restraint in the front seat of any vehicle equipped with a passenger airbag. See the Owner's Manual and child safety seat instructions for more safety information.



Envision Premium II shown in Chili Red Metallic with available features



Apple CarPlay™ on screen

MOBILE

THERE'S NOW A SIMPLER, SMARTER WAY TO USE YOUR SMARTPHONE IN YOUR CAR.

By supporting Apple CarPlay™¹ and Android Auto™¹ Envision provides seamless integration with your smartphone through the vehicle's built-in 8-inch diagonal colour touch-screen.

With Apple CarPlay™¹ just plug in your compatible iPhone® and you'll have easy access to your contacts, maps and select apps that you're familiar with from your iPhone® screen. You can also have Siri® send and read your text messages for you and listen to all of your content from iTunes®, Apple Music™ and other audio apps.

If your phone is an Android™, then Android Auto¹ makes it easy to use the touch-screen display in your Envision to access your phone, texts and music. And with Google Maps, you can get voice-guided navigation, live traffic information, lane guidance and more while keeping your hands on the wheel.



CONNECT WITH ONSTAR 4G LTE WITH BUILT-IN WI-FI® HOTSPOT;² ENVISION LETS YOU STAY CONNECTED ON THE ROAD.

Available OnStar 4G LTE with built-in Wi-Fi hotspot² now travels with you. Stay connected and move effortlessly from home to work to just about anywhere without losing touch. Your passengers can stream movies and TV on the go, using their favourite apps on their devices using the Wi-Fi connection. The built-in Wi-Fi hotspot supports up to seven devices, so passengers can surf, scan, create, post and game their way through the journey.

After initial setup, when your vehicle is on, your hotspot is available and ready to connect to your devices, so it's easy to use. Your first 3 months or 3 GB of data (whichever comes first) are included with your new Envision. After that, select a plan from OnStar that's right for you.

¹Vehicle user interfaces are products of Apple® and Google™ and their terms and privacy statements apply. Requires compatible smartphone. Data plan rates apply. ²Visit onstar.ca for coverage maps, details and system limitations. Service plan required. Available 4G LTE with Wi-Fi hotspot requires WPA2-compatible mobile device and data plan. Data plans provided by AT&T.® Services vary by model, service plan, conditions as well as geographical and technical restrictions. OnStar with 4G LTE connectivity is available on select vehicle models and in select markets. Vehicle must be started or in accessory mode to access Wi-Fi.

ACCESS

A HANDS-FREE POWER LIFTGATE OPENS AND CLOSES AUTOMATICALLY TO MAKE LIFE A LITTLE EASIER.

You know that moment when you realize you need an extra hand? Well, help is now here, thanks to Envision's hands-free power liftgate. This standard feature allows you to open and close the liftgate simply by kicking your foot under a sensor beneath the rear bumper. As long as your Envision's keyless entry fob is in your possession, this convenience is always there for you when you find your hands full. And if we know you, that's a situation you find yourself in all the time.



Dramatic winged headlamps, athletic lines, accented LED tail lamps and a rear spoiler integrated seamlessly into the exterior design elevate Envision's aerodynamic form and function.



Envision Premium II shown in Galaxy Silver Metallic with available features. Dealer-installed accessory wheels shown: 19-inch ultra-bright machine-faced with Midnight Silver painted pockets.

GUIDE

TRAVEL WITH THE ENVISION AND YOUR JOURNEY IS ACCOMPANIED BY A HOST OF AVAILABLE SAFETY INNOVATIONS.

On the 2018 Envision, the available Surround Vision system uses four microcameras embedded in the vehicle to provide the driver with a virtual bird's-eye view around the vehicle. When you're parking, checking the monitor can help you avoid obstacles in your blind spots and navigate tight spaces. Available Forward Collision Alert warns you if it senses a potential collision with a detected vehicle on the road in front of you. If the vehicle is also equipped with available Forward Automatic Braking,¹ the system can automatically engage the brakes to help reduce the collision's severity if a front-end collision is imminent and the driver isn't braking. Teen Driver technology helps support safe driving habits by muting the audio of the radio or any device paired with the vehicle when front-seat occupants aren't wearing their safety belts. Plus, it gives visual and audible warnings when Envision is travelling faster than your preset speed.

MANOEUVRE

ENVISION IS A NIMBLE SUV WITH INGENIOUS TECHNOLOGIES DESIGNED TO HELP YOU HANDLE WHAT COMES YOUR WAY.

What makes Envision such a joy to drive? Part of the answer is in the way it helps you handle the challenges that seem to be around every corner, from finding a parallel parking spot to avoiding objects in your path. Using an available combination of up to five cameras and 10 ultrasonic sensors and three radars around the vehicle, Envision helps offer you peace of mind behind the wheel.

REAR CROSS TRAFFIC ALERT When you're backing out of a parking space, available Rear Cross Traffic Alert technology uses radar to detect vehicles approaching your Envision and alerts you if it detects a vehicle within 20 metres of either side of your vehicle.

FORWARD COLLISION ALERT This available technology can help you to prevent frontal crashes by sensing when you are approaching a detected vehicle in front of you too quickly, and alerting you with visual warnings and audible beeps or vibrations from the available Safety Alert Seat.

FORWARD AUTOMATIC BRAKING¹ Available Forward Automatic Braking technology senses when a front-end crash is imminent with the detected vehicle ahead and then can automatically brake to help you reduce crash severity or help avoid the collision in some very-low-speed situations.

LANE CHANGE ALERT WITH SIDE BLIND ZONE ALERT²

Available Lane Change Alert warns you when detected vehicles are rapidly approaching your blind spots when you're changing lanes. Available Side Blind Zone Alert provides side-mirror alerts when a detected vehicle enters your blind zone.

LANE KEEP ASSIST WITH LANE DEPARTURE WARNING

To help drivers avoid unintentionally drifting out of their lane when turn signals are not activated, available Lane Keep Assist provides gentle steering wheel turns, and if necessary, lane-departure alerts.

These safety features are no substitute for the driver's responsibility to operate the vehicle in a safe manner. The driver should remain attentive to traffic, surroundings and road conditions at all times. Read the vehicle Owner's Manual for important feature limitations and information.

¹The Forward Automatic Braking feature may help reduce crash damage under certain conditions discussed in the Owner's Manual. Never rely on this feature to brake the vehicle. ²Before making a lane change, always check the exterior and interior rear-view mirrors, look over your shoulder for vehicles and hazards and start the turn signal.



AVAILABLE SURROUND VISION

This system provides a virtual bird's-eye view of what's around you during low-speed manoeuvring. Multiple cameras help you avoid obstacles, reduce blind spots and navigate even the tightest spaces with clarity and confidence.

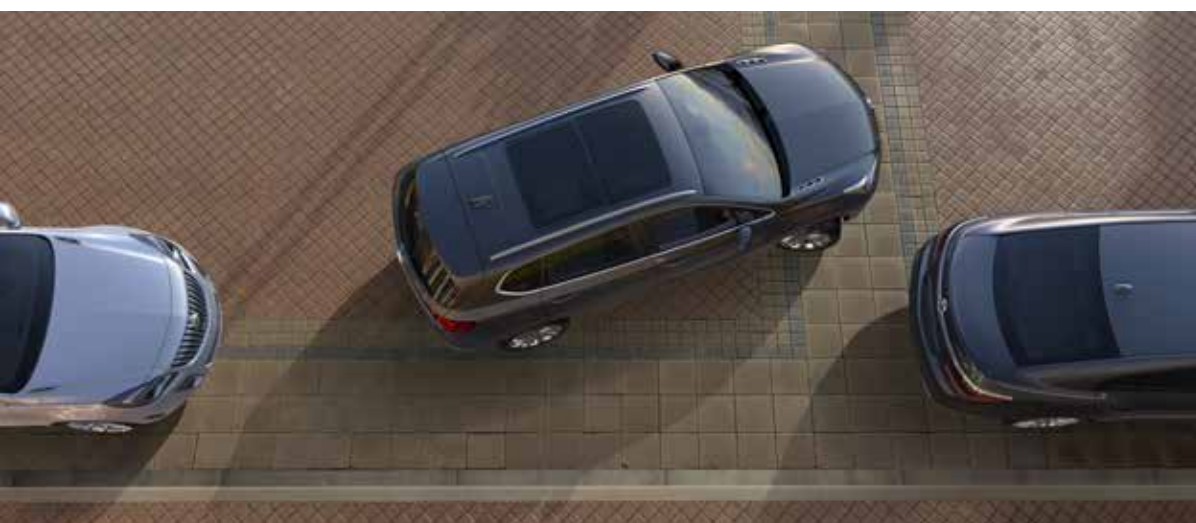


AVAILABLE SAFETY ALERT SEAT

When a collision-avoidance technology such as available Lane Departure Warning triggers an alert, the Safety Alert Seat issues a warning of its own. The left and/or right side of the driver seat cushion gently vibrate to signal the direction of the approaching hazard. For some types of alerts, both sides of the seat vibrate at the same time, for example, if the threat is in front of the vehicle.



REAR VISION CAMERA To help you better navigate while backing up, the Rear Vision Camera shows you guidelines and live images of what's behind you on the 8-inch diagonal Colour Touch Radio screen.



AUTOMATIC PARKING ASSIST

This available system helps the driver parallel and perpendicular park by automatically steering the vehicle into a detected parking space while the driver follows on-screen text commands, selects gears and does all braking and acceleration.



CONNECT TO A SPECIALLY TRAINED ONSTAR ADVISOR JUST BY PUSHING THE BLUE ONSTAR BUTTON IN YOUR ENVISION.



Every 2018 Envision includes the OnStar Basic Plan² for 5 years plus a 6-month trial of the Guidance Plan that includes a comprehensive suite of emergency, security, navigation and diagnostic services. OnStar can help keep you connected and ready for the road ahead.



EMERGENCY: HELP WHEN IT MATTERS MOST. With Automatic Crash Response,³ you can be immediately connected to the help you need the moment you need it, even if you can't ask for it. If you're stranded, have a flat tire or need a tow truck, use Roadside Assistance⁴ and an OnStar Advisor will locate a nearby service provider and direct them to your exact location.



SECURITY: GET YOUR VEHICLE BACK QUICKLY AND SAFELY IF IT'S EVER STOLEN. Breathe easy knowing a comprehensive suite of Stolen Vehicle Assistance⁵ services is available to help recover your vehicle. With Theft Alarm Notification,⁶ OnStar can alert you if your vehicle's alarm is sounding, and if your vehicle is stolen, OnStar can work with authorities to help locate and attempt to recover it quickly.



NAVIGATION: TRAVEL MADE EASY. Turn-by-Turn Navigation⁷ makes everywhere you go as familiar as your own neighbourhood. And with OnStar AtYourService,^{TM8} you can book hotel rooms from the road.



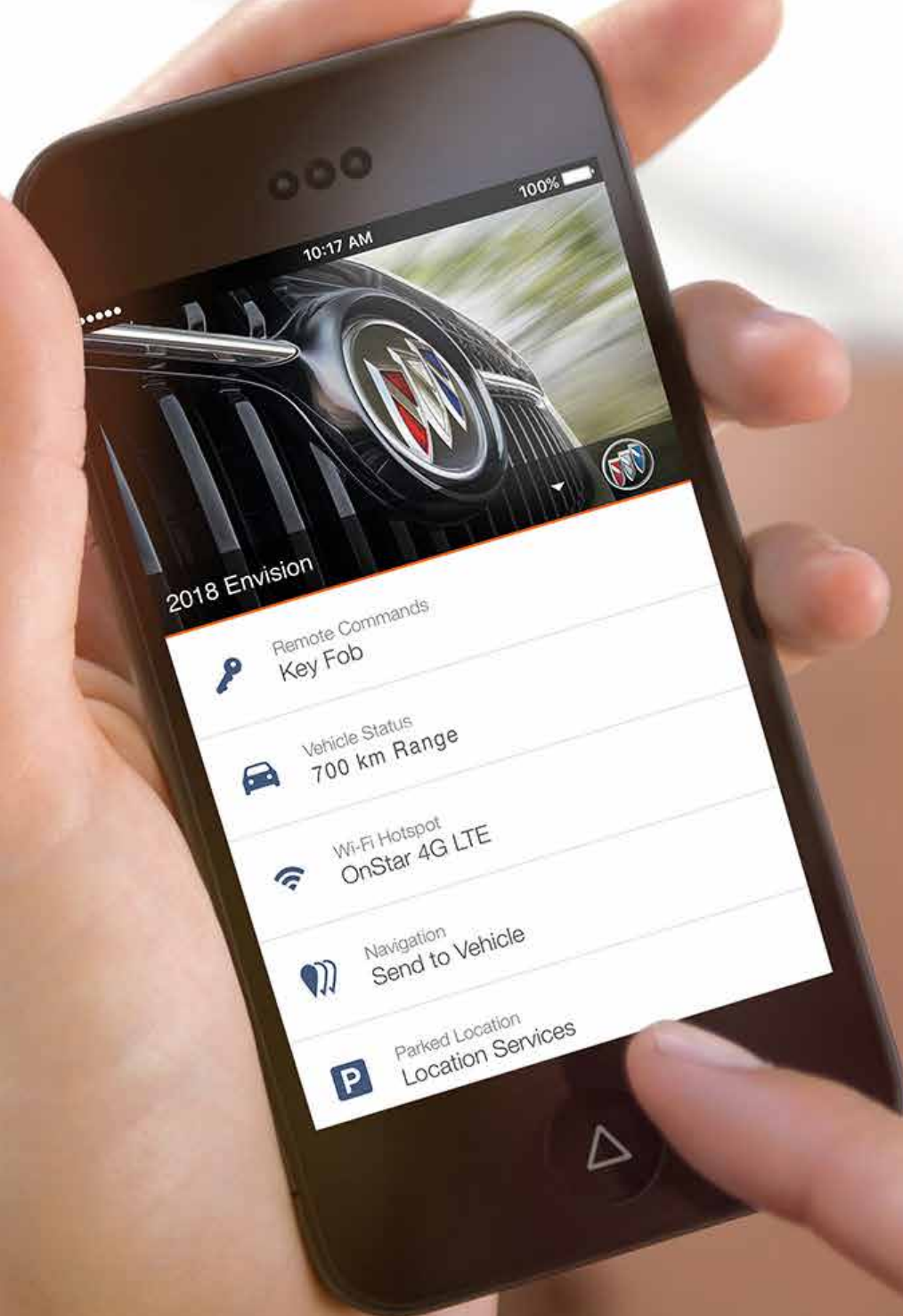
CONNECTIONS: FAST AND RELIABLE. Stay connected with the available OnStar 4G LTE with built-in Wi-Fi hotspot¹ and connect up to seven devices.



VEHICLE MANAGER: PREPARING YOU FOR WHAT'S AHEAD. Enjoy the ultimate ownership experience with your myBuick mobile app.⁹ Use Remote Access¹⁰ to start your engine, lock and unlock your doors, honk the horn and flash the lights from anywhere there is cellphone service. Get real-time Diagnostic Alerts¹¹ or a monthly diagnostics report of the vehicle's engine, transmission and more with Advanced Diagnostics.¹¹

¹Visit onstar.ca for coverage maps, details and system limitations. Service plan required. Available 4G LTE with Wi-Fi hotspot requires WPA2-compatible mobile device and data plan. Data plans provided by AT&T. Services vary by model, service plan and conditions as well as geographical and technical restrictions. OnStar with 4G LTE connectivity is available on select vehicle models and in select markets. Vehicle must be started or in accessory mode to access Wi-Fi.

²The OnStar Basic Plan is available on eligible new vehicles for 5 years and is transferable to subsequent owners for the remaining term. It includes the monthly Diagnostics Report emails (capabilities vary by model), Dealer Maintenance Notification, access to select vehicle mobile app features and more. This plan does not include emergency, security or navigation services. These and other services require a paid or Add-On Plan. Visit onstar.ca for vehicle availability, coverage maps, details and system limitations. Available 4G LTE with Wi-Fi hotspot requires WPA2-compatible mobile device and data plan. Data plans are provided by AT&T. ³Visit onstar.ca for vehicle availability, details and system limitations. OnStar acts as a link to existing emergency service providers. Not all vehicles may transmit all crash data. ⁴Roadside service provided by Allstate Roadside Services. Limitations and restrictions apply. ⁵Service varies by model and conditions. Visit onstar.ca for details and system limitations. Stolen Vehicle Slowdown and Remote Ignition Block are available on select 2009 and newer GM vehicles. ⁶Capability varies by model and conditions as well as geographical and technical restrictions. Visit onstar.ca for vehicle availability, details and system limitations. Requires factory-installed theft-deterrent system and Security or Guidance plan or Stolen Vehicle Assistance Add-On Plan and selected notification preference(s). Vehicles must be locked electronically to arm the factory-installed theft-deterrent system. Messaging and data rates may apply. ⁷Requires Basic Plan and NAV system to send directions through the mobile app. Turn-by-Turn directions also available through an Advisor with the Guidance Plan or Navigation Add-On Plan. Visit onstar.ca for coverage maps. Services vary by model. ABS required. ⁸Not available on Basic Plan. Hotel booking and billing done through Priceline.[®] Offers may vary. Check AtYourService through a blue OnStar button press for latest offers. ⁹Available on select Apple[®] and Android devices. Some features may require a paid OnStar service plan. Features and capability may vary by vehicle, device and conditions as well as geographical and technical restrictions. Device data connection required. ¹⁰Visit onstar.ca for coverage maps, details and system limitations. Services vary by model, conditions as well as geographical and technical restrictions. Unlock feature requires automatic locks. Remote start requires factory-installed and enabled remote-start system. ¹¹Availability and capabilities vary by model. Visit onstar.ca for details and system limitations. Message and data rates may apply. Requires active OnStar service, email address on file and enrolment in Advanced Diagnostics which may include access to the monthly Diagnostics Report emails, Diagnostic and Proactive Alerts, Dealer Maintenance Notification and On-Demand Diagnostics (requires paid service plan). Other factors may affect vehicle performance. Not all issues will deliver alerts. In certain scenarios, a dealer service check may be required to confirm the accuracy of the Diagnostic and Proactive Alerts.



PERSONALIZE

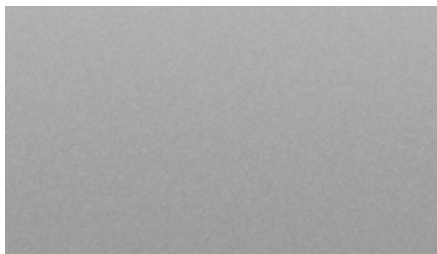
ENVISION OFFERS A CAPTIVATING CHOICE OF EXTERIOR AND INTERIOR COLOURS, AND A RANGE OF WHEELS.

EXTERIOR COLOURS

SUMMIT WHITE



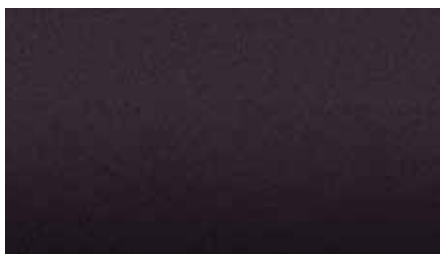
GALAXY SILVER METALLIC



CHILI RED METALLIC¹



MIDNIGHT AMETHYST METALLIC¹



EBONY TWILIGHT METALLIC¹



BRONZE ALLOY METALLIC¹



WHEELS

18" 10-SPOKE PAINTED ALUMINUM
Standard on Preferred



18" 10-SPOKE POLISHED ALUMINUM
Standard on Essence



19" 10-SPOKE ALUMINUM WITH
PREMIUM MANOOGIAN FINISH
Standard on Premium and Premium II



¹Additional charge, premium paint.

INTERIOR COLOURS

LIGHT NEUTRAL WITH EBONY ACCENTS CLOTH OR LEATHER-APPOINTED SEATING



EBONY WITH EBONY ACCENTS LEATHER-APPOINTED SEATING



EBONY WITH DARK PLUM ACCENTS LEATHER-APPOINTED SEATING



CHESTNUT WITH EBONY ACCENTS LEATHER-APPOINTED SEATING



FEATURES

● STANDARD ◇ AVAILABLE — NOT AVAILABLE	PREFERRED	ESSENCE	PREMIUM	PREMIUM II
POWER PROGRAMMABLE HANDS-FREE LIFTGATE	●	●	●	●
KEYLESS OPEN AND START	●	●	●	●
HEATED FRONT SEATS	●	●	●	●
REAR VISION CAMERA	●	●	●	●
REAR PARK ASSIST	●	●	●	●
APPLE CARPLAY™ COMPATIBILITY ¹	●	●	●	●
ANDROID AUTO™ COMPATIBILITY ¹	●	●	●	●
ONSTAR 4G LTE WITH BUILT-IN WI-FI® HOTSPOT ² (3-month/3 GB trial, whichever comes first)	●	●	●	●
HEATED STEERING WHEEL	—	●	●	●
PERFORATED, LEATHER-APPOINTED SEATING SURFACES	—	●	●	●
DRIVER MEMORY SETTINGS	—	●	●	●
LANE CHANGE ALERT WITH SIDE BLIND ZONE ALERT ³	—	●	●	●
FRONT RAINSENSE WIPERS	—	—	●	●
DRIVER SAFETY ALERT SEAT	—	—	●	●
LANE KEEP ASSIST WITH LANE DEPARTURE WARNING	—	—	●	●
FORWARD COLLISION ALERT	—	—	●	●
8-INCH DIAGONAL MULTICOLOUR DRIVER INFORMATION CENTRE	—	—	●	●
ALL-WHEEL DRIVE	●	●	—	—
ALL-WHEEL DRIVE WITH ACTIVE TWIN CLUTCH WITH FRONT HIPER STRUT SUSPENSION	—	—	●	●
VENTILATED AND COOLED FRONT SEATS	—	—	—	●
AUTOMATIC PARKING ASSIST Includes Ultrasonic Front and Rear Park Assist	—	—	—	●
HEAD-UP DISPLAY	—	—	—	●
PANORAMIC SUNROOF	—	◇	◇	◇
SURROUND VISION ⁴	—	—	—	◇

¹Vehicle user interfaces are products of Apple® and Google™ and their terms and privacy statements apply. Requires compatible smartphone and data plan rates apply. Requires the Android Auto app on Google Play and an Android-compatible smartphone running Android™ 5.0 Lollipop or higher. Google, Google Play, Android and Android Auto are trademarks of Google Inc. ²Visit onstar.ca for coverage maps, details and system limitations. Service plan required. Available 4G LTE with Wi-Fi hotspot requires WPA2-compatible mobile device and data plan. Data plans provided by AT&T.® Services vary by model, service plan and conditions as well as geographical and technical restrictions. OnStar with 4G LTE connectivity is available on select vehicle models and in select markets. Vehicle must be started or in accessory mode to access Wi-Fi. ³Before making a lane change, always check the exterior and interior rear-view mirrors, look over your shoulder for vehicles and hazards and start the turn signal. ⁴Included and only available with Driver Confidence Package.

PACKAGES

◇ AVAILABLE — NOT AVAILABLE	PREFERRED	ESSENCE	PREMIUM	PREMIUM II
DRIVER CONFIDENCE PACKAGE: Includes Adaptive Cruise Control, ¹ Surround Vision and Forward Automatic Braking ²	—	—	—	◇
BUICK INTERIOR PROTECTION PACKAGE: Includes the following dealer-installed accessories: front and rear all-weather floor mats and all-weather cargo mat (not available with Interior Luxury Package, Hit the Road Package or Road Trip Package)	◇	◇	◇	◇
CARGO PACKAGE: Includes the following dealer-installed accessories: cargo shade and cargo net	◇	◇	◇	◇
HIT THE ROAD PACKAGE: Includes the following dealer-installed accessories: integrated cargo liner, custom-moulded body-colour splash guards and roof rack cross rails (not available with Buick Interior Protection Package, Active Package or Road Trip Package)	—	◇	◇	◇
INTERIOR LUXURY PACKAGE: Includes the following dealer-installed accessories: illuminated front-door sill plates and premium carpeted floor mats (not available with Buick Interior Protection Package)	◇	◇	◇	◇
ACTIVE PACKAGE: Includes the following dealer-installed accessories: Trailering Package ³ and integrated cargo liner (not available with Hit the Road Package)	◇	◇	◇	◇
ROAD TRIP PACKAGE: Includes the following dealer-installed accessories: roof rack cross rails and all-weather floor mats (not available with Buick Interior Protection Package or Hit the Road Package)	◇	◇	◇	◇
TRAILERING PACKAGE: ³ Includes trailer hitch and wiring harness (included and only available with Active Package)	◇	◇	◇	◇

¹Adaptive Cruise Control is no substitute for the driver's personal responsibility to operate the vehicle in a safe manner. The driver needs to remain attentive to traffic and road conditions and provide the steering, braking or other inputs necessary to retain control of the vehicle. The Front Automatic Braking feature may help reduce crash damage under certain conditions discussed in the Owner's Manual. Never rely on this feature to brake the vehicle. ²The Forward Automatic Braking feature may help reduce crash damage under certain conditions discussed in the Owner's Manual. Never rely on this feature to brake the vehicle. ³Before you buy a vehicle or use it for trailering, carefully review the trailering section of the Owner's Manual. The weight of passengers, cargo and options or accessories may reduce the amount you can tow.

SPECIFICATIONS

DIMENSIONS
AND CAPACITIES

CAPACITIES

	Standard engine on Preferred and Essence	Standard engine on Premium and Premium II
Engine Type	2.5L DOHC SIDI with VVT	2.0L Turbo DOHC SIDI with VVT
Horsepower	197	252
Torque	192 lb.-ft.	260 lb.-ft.
Estimated Fuel Consumption ¹ L/100 km (mpg)	11.1 (25) city/ 8.6 (33) hwy (AWD)	11.8 (24) city/ 9.1 (31) hwy (AWD)
Fuel Tank, L (gal.) (approx.)	65.5 (17.3)	65.5 (17.3)
Cargo Capacity, ² L (cu. ft.)	With seats up: 761.8 (26.9) Seats down: 1622.7 (57.3)	With seats up: 761.8 (26.9) Seats down: 1622.7 (57.3)

¹Fuel-consumption ratings based on GM testing in accordance with Government of Canada approved test methods. Refer to vehicles.nrcan.gc.ca for details. Your actual fuel consumption may vary. ²Cargo and load capacity limited by weight and distribution.

DIMENSIONS, MM (IN.)

Wheelbase	2751 (108.3)
Overall length	4666 (183.7)
Body width	1839 (72.4)
Overall height	1697 (66.8)
Track width, front/rear	1575/1575 (62.0/62.0)
Head room, front/rear	1016/978 (40.0/38.5)
Shoulder room, front/rear	1448/1417 (57.0/55.8)
Hip room, front/rear	1382/1349 (54.4/53.1)
Leg room, front/rear	1039/952 (40.9/37.5)



Envision Premium II shown in Galaxy Silver Metallic. Dealer-installed accessory wheels shown: 19-inch ultra-bright machine-faced with Midnight Silver painted pockets.

IMPORTANT WORDS



BUICK OWNERSHIP: IT'S A GOOD FEELING.

Our commitment to you includes:

- 2-year/48,000 km Lube-Oil-Filter Maintenance¹
- 4-year/80,000 km New-Vehicle Limited Warranty²
- 6-year/110,000 km Powertrain Limited Warranty² with \$0 deductible on repairs; warranty is fully transferable at no charge
- 6-year/110,000 km Courtesy Transportation²
- 6-year/110,000 km 24/7 Roadside Assistance²
- 6-year/unlimited km rust-through perforation coverage²
- 8-year/130,000 km coverage on catalytic converters and Powertrain Control Modules (PCMs)²

¹Whichever comes first. Limit of four complimentary Lube-Oil-Filter services in total. Fluid top-offs, inspections, tire rotations, wheel alignments and balancing, etc., are not covered. Conditions and limitations apply. See your dealer for details. ²Whichever comes first. Conditions and limitations apply. See your dealer for details.

OTHER OWNERSHIP PRIVILEGES AND PROGRAMS:³

- **GM PROTECTION PLAN (GMPP)** – The only extended service plan backed by the resources and commitment of General Motors; GMPP may be purchased at the time of sale or subsequently during the New-Vehicle Limited Warranty period.
- **BUICK CERTIFIED SERVICE** – With Buick-certified technicians and Buick-approved parts, nobody knows your Buick vehicle better.
- **CERTIFIED SERVICE MAINTENANCE PLAN** – The only maintenance plan designed specifically for buyers of Buick vehicles and backed by the resources and commitment of General Motors. Buick Maintenance Plans may be purchased at the time of sale or on vehicles up to 3 model years old and with 60,000 km or less on the odometer.
- **BUICK OWNER CENTRE** – As an owner, take advantage of the Buick Owner Centre. This online owner's destination gives you access to contests, current offers and helpful resources such as Owner's Manuals. Find out more at buickowner.ca.

³Conditions and limitations apply.

TO HELP YOU PURCHASE OR LEASE YOUR NEW BUICK:

- **PURCHASE FINANCING AND LEASING** – On-the-spot financing. See dealer for full details.⁴
- **GM STUDENT BONUS PROGRAM** – Students or recent graduates of high school, college or university⁵ may be entitled to receive a Student Bonus vehicle redemption allowance of \$500 or \$750⁶ (tax inclusive) (purchased vehicle dependant) to use toward the purchase, lease or finance of one eligible new Buick vehicle.
- **GM CARD** – Cardholders may redeem Earnings toward the total purchase price or lease down payment of an eligible new Chevrolet, Buick, GMC or Cadillac. Restrictions and limitations apply.⁶ For full program details, please visit gmc card.ca.

⁴Subject to eligibility. ⁵Conditions and limitations apply. ⁶Program subject to change.

INFORMATION RESOURCES:

You can find more information about these programs from your GM dealer, or at these information centres:

- The Buick website at buick.ca.
- The GM Customer Care Centre at 1-800-GM-DRIVE (1-800-463-7483 or 1-800-263-3830 for TDD users).

A WORD ABOUT THIS BROCHURE

Some of the equipment shown or described throughout this brochure may be available at extra cost. We have tried to make this brochure comprehensive and factual. We reserve the right, however, to make changes at any time without notice, in prices, colours, materials, equipment, specifications, models and availability. Specifications, dimensions, measurements, ratings and other numbers in this brochure and other printed materials provided at the dealership or affixed to vehicles are approximates based upon design and engineering drawings and prototypes and laboratory tests. Your vehicle may differ due to variations in manufacture and equipment. Since some information may have been adapted since the time of printing, please check with your GM dealer for complete details. General Motors of Canada Company reserves the right to lengthen or shorten the model year for any product, for any reason, or to start and end model years at different times.

A WORD ABOUT ASSEMBLY

GM vehicles are equipped with engines and components produced and assembled by different operating units of General Motors, its subsidiaries and suppliers, and these engines and components may change or be obtained from different sources from time to time. All such engines and components are approved for use in GM vehicles. Certain equipment ordered may be unavailable at the time of assembly and we suggest that you verify that your vehicle includes the equipment you ordered, or if there are changes, that they are acceptable to you.

TRADEMARKS

The marks appearing in this brochure, including, but not limited to: General Motors, GM, Buick, the Buick logo, Envision and their respective logos, emblems, slogans and vehicle model names and body designs; and other marks such as StabiliTrak, are trademarks of General Motors and/or General Motors of Canada Company, its subsidiaries, affiliates or licensors. Sirius, XM and all related marks are trademarks of SiriusXM Radio, Inc. The Facebook logo is a trademark of Facebook, Inc. The Twitter logo is a trademark of Twitter, Inc. The YouTube logo, Android Auto and Google Play are trademarks of Google Inc. Apple CarPlay is a trademark of Apple, Inc. Siri and iPhone are registered trademarks of Apple, Inc. Bose is a registered trademark of Bose Corporation.

COPYRIGHT

©2017 General Motors of Canada Company. All rights reserved. All text, images, graphics and other materials in this brochure are subject to the copyright and other intellectual property rights of General Motors and/or General Motors of Canada Company. These materials may not be reproduced, distributed or modified without the express written permission of General Motors and/or General Motors of Canada Company.